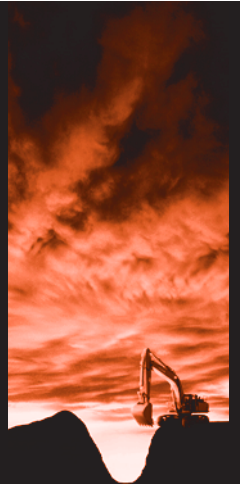
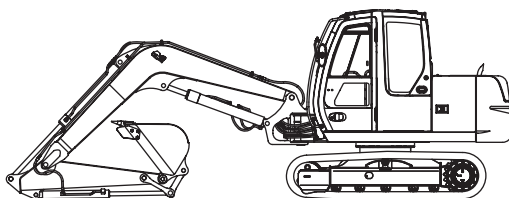


HITACHI ZAXIS 80SB

engine rated power
39 kW / 52 HP

operating weight
ZAXIS 80SB : 7 360 - 8 120 kg
ZAXIS 80SBLC : 7 440 - 8 210 kg

bucket capacity
SAE, PCSA heaped : 0.13 - 0.33 m³
CECE heaped : 0.12 - 0.29 m³



HITACHI

Weights and ground pressure

ZAXIS 80SB / ZAXIS 80SBLC (WITHOUT BLADE):

Equipped with 3.28 m monoblock boom, 1.62 m arm and 0.28 m³ (SAE, PCSA heaped) bucket.

Shoe type	Shoe width	Operating weight	Ground pressure
Triple grouser	450 mm	7 400 kg	34 kPa (0.35 kgf/cm ²)
Triple grouser	450 mm	7 490 kg	32 kPa (0.33 kgf/cm ²)
Triple grouser	600 mm	7 570 kg	26 kPa (0.27 kgf/cm ²)
Triple grouser	600 mm	7 660 kg	25 kPa (0.25 kgf/cm ²)
Pad	450 mm	7 390 kg	34 kPa (0.35 kgf/cm ²)
Pad	450 mm	7 480 kg	32 kPa (0.33 kgf/cm ²)
Rubber	450 mm	7 360 kg	34 kPa (0.35 kgf/cm ²)
Rubber	450 mm	7 440 kg	32 kPa (0.33 kgf/cm ²)
Flat	450 mm	7 570 kg	35 kPa (0.36 kgf/cm ²)
Flat	450 mm	7 660 kg	33 kPa (0.34 kgf/cm ²)

Figures in are data on the ZAXIS 80SBLC.

Weights of the basic machines [including 1 200 kg counterweight and triple grouser shoes, excluding front-end attachment, fuel, hydraulic oil, engine oil and coolant etc.] are:

Without blade:

ZAXIS 80SB 6 060 kg with 450 mm shoes
 ZAXIS 80SBLC 6 140 kg with 450 mm shoes

ZAXIS 80SB / ZAXIS 80SBLC (WITH BLADE):

Equipped with 3.28 m monoblock boom, 1.62 m arm and 0.28 m³ (SAE, PCSA heaped) bucket.

Shoe type	Shoe width	Operating weight	Ground pressure
Triple grouser	450 mm	7 950 kg	36 kPa (0.37 kgf/cm ²)
Triple grouser	450 mm	8 030 kg	35 kPa (0.36 kgf/cm ²)
Triple grouser	600 mm	8 110 kg	28 kPa (0.29 kgf/cm ²)
Triple grouser	600 mm	8 210 kg	26 kPa (0.27 kgf/cm ²)
Pad	450 mm	7 940 kg	36 kPa (0.37 kgf/cm ²)
Pad	450 mm	8 020 kg	34 kPa (0.35 kgf/cm ²)
Rubber	450 mm	7 900 kg	36 kPa (0.37 kgf/cm ²)
Rubber	450 mm	7 980 kg	34 kPa (0.35 kgf/cm ²)
Flat	450 mm	8 120 kg	37 kPa (0.38 kgf/cm ²)
Flat	450 mm	8 210 kg	35 kPa (0.36 kgf/cm ²)

Figures in are data on the ZAXIS 80SBLC.

Weights of the basic machines [including 1 200 kg counterweight and triple grouser shoes, excluding front-end attachment, fuel, hydraulic oil, engine oil and coolant etc.] are:

With blade

ZAXIS 80SB 6 610 kg with 450 mm shoes
 ZAXIS 80SBLC 6 690 kg with 450 mm shoes

Service refill capacities

Fuel tank	135.0 l
Engine coolant	9.5 l
Engine oil	12.0 l
Travel final device (each side)	2.5 l
Hydraulic system	100.0 l
Hydraulic tank (Reference oil level)	60.0 l

Backhoe attachments

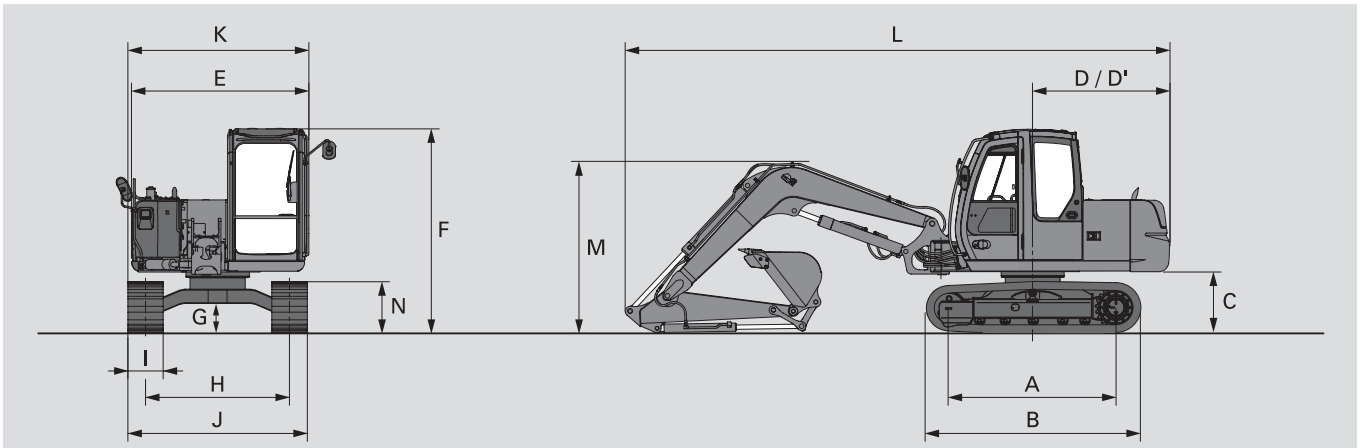
Boom and arms are of all-welded, box-section design. 3.28 m monoblock boom, 1.62 m and 2.12 m arms are available. Bucket is of all-welded steel structure. Side clearance adjust mechanism provided on the bucket joint bracket.

BUCKETS

Capacity SAE, PCSA heaped	Width	Weight
	Without side cutters	
0.24 m ³	500 mm	231 kg
0.27 m ³	600 mm	251 kg
0.32 m ³	700 mm	286 kg
0.38 m ³	800 mm	306 kg

SPECIFICATIONS

Dimensions



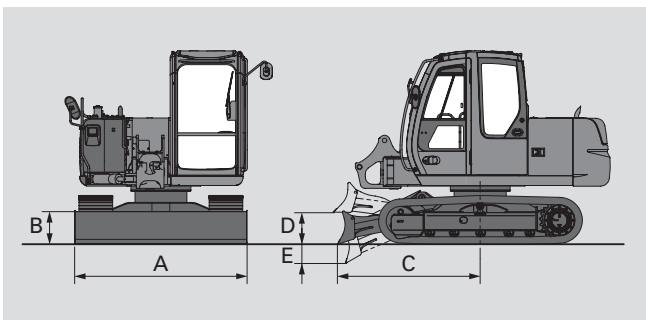
Unit: mm

	ZAXIS 80SB	ZAXIS 80SBLC	ZAXIS 80SB with pad crawler	ZAXIS 80SBLC with pad crawler
A Sprocket centre to idler centre	2 140	2 290	2 140	2 290
B Undercarriage length	2 765	2 920	2 815	2 970
*C Counterweight clearance	760	760	810	810
D Rear-end swing radius	1 750	1 750	1 750	1 750
D' Rear-end length	1 750	1 750	1 750	1 750
E Overall width of upper structure	2 260	2 260	2 260	2 260
F Overall height of cabin	2 600	2 600	2 630	2 630
*G Min. ground clearance	360	360	410	410
H Track gauge	1 750	1 870	1 750	1 870
I Track shoe width	G 450	G 450	P 450	P 450
J Undercarriage width	2 200	2 320	2 200	2 320
K Overall width	2 260	2 320	2 260	2 320
L Overall length				
With 1.62 m arm	6 960	6 960	6 960	6 960
With 2.12 m arm	7 130	7 130	7 130	7 130
M Overall height of boom				
With 1.62 m arm	2 170	2 170	2 170	2 170
With 2.12 m arm	2 600	2 600	2 600	2 600
N Track height	655	655	715	715

* Excluding track shoe lug.

G: Triple grouser shoe

P: Pad crawler



ZAXIS 80SB / ZAXIS 80SBLC WITH DOZER BLADE (OPTION)

Equipped with 3.28 m boom, 1.62 m arm, 450 mm triple grouser shoe and 0.28 m³ (SAE, PCSA heaped) for ZAXIS70 bucket.

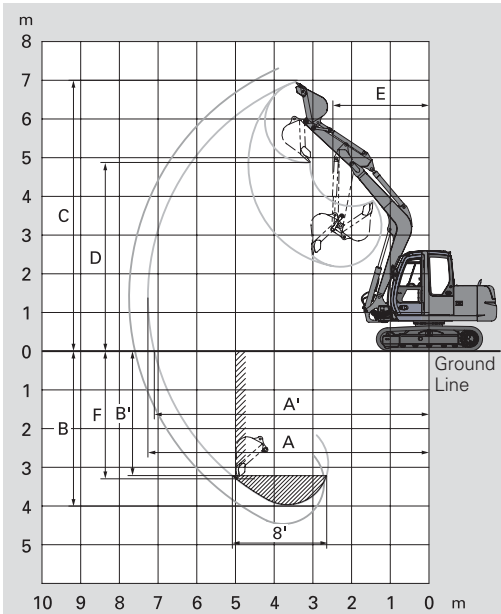
Operating weight STD: 7 950 kg
LC: 8 030

Ground pressure STD: 36 kPa (0.37 kgf/cm²)
LC: 35 kPa (0.36 kgf/cm²)

A Overall width of blade 2 320 mm
B Overall height of blade 435 mm
C Blade distance 1 920 mm
D Max. raising height above ground 400 mm
E Max. lowering depth from ground 280 mm

SPECIFICATIONS

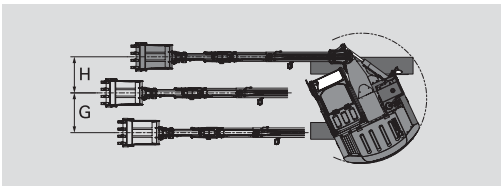
Working ranges



Unit: mm

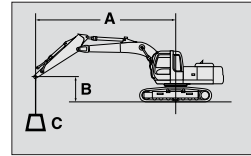
	ZAXIS 80 SB	ZAXIS 80 SBLC	ZAXIS 80 SB with pad crawler	ZAXIS 80 SBLC with pad crawler
Arm length	1.62 m	2.12 m	1.62 m	2.12 m
A Max. digging reach	7 260	7 750	7 260	7 760
A' Max. digging reach (on ground)	7 100	7 590	7 090	7 580
B Max. digging depth	4 000	4 500	3 950	4 450
B' Max. digging depth (8' level)	3 210	3 740	3 160	3 690
C Max. cutting height	6 940	7 330	6 990	7 380
D Max. dumping height	4 850	5 230	4 900	5 280
E Min. swing radius	2 550	2 900	2 550	2 900
F Max. vertical wall	3 320	3 830	3 270	3 260
G Left side off-set distance	1 070	1 070	1 070	1 070
H Right side off-set distance	970	970	970	970
Bucket digging force ISO	55 kN (5 600 kgf)	55 kN (5 600 kgf)	55 kN (5 600 kgf)	55 kN (5 600 kgf)
Bucket digging force SAE: PCSA	47 kN (4 800 kgf)	47 kN (4 800 kgf)	47 kN (4 800 kgf)	47 kN (4 800 kgf)
Arm crowding force ISO	38 kN (3 900 kgf)	32 kN (3 300 kgf)	38 kN (3 900 kgf)	32 kN (3 300 kgf)
Arm crowding force SAE: PCSA	36 kN (3 700 kgf)	31 kN (3 20 kgf)	36 kN (3 700 kgf)	31 kN (3 200 kgf)

Excluding track shoe lug.



LIFTING CAPACITIES

Metric measure



A: Load radius
B: Load point height
C: Lifting capacity

ZAXIS 80SB



Rating over-side or 360 degrees



Rating over-front

Unit: kg

Conditions	Load point height	Load radius										At max. reach		
		2 m		3 m		4 m		5 m		6 m		meter		
Arm 1.62 m Shoe 450 mm	4 m					2 110	1 720	1 470	1 200			1 270	1 040	5.45
	3 m			3 200	2 550	2 030	1 640	1 440	1 170			1 100	890	5.93
	2 m					1 910	1 530	1 390	1 120	1 060	850	1 010	820	6.16
	1 m					1 820	1 440	1 340	1 070	1 030	830	990	790	6.18
	0 m			*2 480	2 120	1 770	1 400	1 300	1 040			1 020	810	6.00
	-1 m	*3 220	*3 220	2 760	2 140	1 770	1 400	1 300	1 030			1 120	900	5.57
	-2 m			2 800	2 170	1 790	1 420					1 380	1 100	4.84
	-3 m													
Arm 2.11 m Shoe 450 mm	4 m					*1 880	1 760	1 490	1 220	1 100	890	1 090	880	6.01
	3 m					2 070	1 680	1 460	1 180	1 090	880	960	780	6.44
	2 m					1 950	1 570	1 400	1 130	1 060	850	900	720	6.65
	1 m					1 830	1 460	1 340	1 070	1 030	820	880	700	6.67
	0 m			*2 540	2 090	1 770	1 390	1 290	1 030	1 000	800	900	710	6.50
	-1 m	*2 500	*2 500	2 710	2 090	1 740	1 370	1 270	1 010	990	790	970	770	6.12
	-2 m	*3 980	*3 980	2 730	2 110	1 750	1 380	1 280	1 010			1 130	900	5.48
	-3 m			2 800	2 170	1 790	1 420					1 560	1 240	4.42

ZAXIS 80SB, BLADE (DOWN)

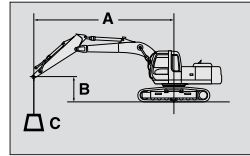
Unit: kg

Conditions	Load point height	Load radius										At max. reach		
		2 m		3 m		4 m		5 m		6 m		meter		
Arm 1.62 m Shoe 450 mm	4 m					*2 260	1 860	*2 090	1 310			*1 760	1 130	5.45
	3 m			*3 850	2 760	*2 700	1 790	*2 240	1 280			*1 750	980	5.93
	2 m					*3 310	1 680	*2 480	1 230	*2 080	940	*1 830	900	6.16
	1 m					*3 710	1 590	*2 680	1 180	*2 130	920	*2 010	880	6.18
	0 m			*2 480	2 340	*3 720	1 550	*2 710	1 150			*2 060	900	6.00
	-1 m	*3 220	*3 220	*4 620	2 350	*3 390	1 540	*2 490	1 140			*2 040	990	5.57
	-2 m			*3 350	2 390	*2 670	1 560					*1 940	1 210	4.84
	-3 m													
Arm 2.11 m Shoe 450 mm	4 m					*1 880	*1 880	*1 820	1 330	*1 490	980	*1 440	970	6.01
	3 m					*2 320	1 830	*2 010	1 290	*1 840	970	*1 430	860	6.44
	2 m					*2 970	1 710	*2 290	1 240	*1 950	940	*1 470	800	6.65
	1 m					*3 520	1 600	*2 560	1 180	*2 060	910	*1 580	780	6.67
	0 m			*2 540	2 300	*3 730	1 540	*2 690	1 140	*2 100	890	*1 790	790	6.50
	-1 m	*2 500	*2 500	*3 910	2 300	*3 580	1 510	*2 610	1 120	*1 950	880	*1 860	850	6.12
	-2 m	*3 980	*3 980	*4 350	2 330	*3 080	1 520	*2 220	1 120			*1 830	1 000	5.48
	-3 m			*2 810	2 390	*2 000	1 560					*1 620	1 370	4.42

- Notes:
1. Ratings are based on ISO 10567.
 2. Lifting capacity of the ZAXIS Series does not exceed 75% of tipping load with the machine on firm level ground, or 87% full hydraulic capacity.
 3. The load point is the center-line of the bucket pivot mounting pin on the arm.
 4. *Indicates load limited by hydraulic capacity.
 5. 0 m = Ground.

LIFTING CAPACITIES

Metric measure



A: Load radius
B: Load point height
C: Lifting capacity

ZAXIS 80SBLC



Rating over-side or 360 degrees



Rating over-front

Unit: kg

Conditions	Load point height	Load radius										At max. reach		
		2 m		3 m		4 m		5 m		6 m		meter		
Arm 1.62 m Shoe 450 mm	4 m					*2 260	1 890	1 630	1 320			1 410	1 140	5.45
	3 m			3 610	2 820	2 260	1 810	1 600	1 290			1 220	980	5.93
	2 m					2 140	1 700	1 550	1 240	1 180	940	1 130	900	6.16
	1 m					2 040	1 600	1 490	1 190	1 150	920	1 100	880	6.18
	0 m			2 480	2 390	2 000	1 560	1 460	1 160			1 140	900	6.00
	-1 m	*3 220	*3 220	3 140	2 400	1 990	1 560	1 450	1 150			1 260	990	5.57
	-2 m			3 180	2 440	2 020	1 580					1 540	1 220	4.84
	-3 m													
Arm 2.12 m Shoe 450 mm	4 m					*1 880	*1 880	1 650	1 340	1 220	980	*1 210	980	6.01
	3 m					2 300	1 850	1 620	1 300	1 210	970	*1 070	860	6.44
	2 m					2 180	1 730	1 560	1 250	1 180	940	1 000	800	6.65
	1 m					2 060	1 620	1 500	1 190	1 150	910	980	780	6.67
	0 m			*2 540	2 350	1 990	1 550	1 450	1 140	1 120	890	1 000	790	6.50
	-1 m	*2 500	*2 500	3 090	2 350	1 970	1 530	1 430	1 120	1 110	880	1 080	860	6.12
	-2 m	*3 980	*3 980	3 120	2 380	1 970	1 540	1 430	1 130			1 270	1 000	5.48
	-3 m			*2 810	2 440	*2 000	1 580					*1 620	1 380	4.42

ZAXIS 80SBLC, BLADE (DOWN)

Unit: kg

Conditions	Load point height	Load radius										At max. reach		
		2 m		3 m		4 m		5 m		6 m		meter		
Arm 1.62 m Shoe 450 mm	4 m					*2 260	2 030	*2 090	1 430			*1 760	1 240	5.45
	3 m			*3 850	3 040	*2 700	1 960	*2 240	1 400			*1 750	1 070	5.93
	2 m					*3 310	1 840	*2 480	1 350	*2 080	1 030	*1 830	990	6.16
	1 m					*3 710	1 750	*2 680	1 300	*2 130	1 010	*2 010	960	6.18
	0 m			*2 480	2 480	*3 720	1 710	*2 710	1 260			*2 060	990	6.00
	-1 m	*3 220	*3 220	*4 620	2 620	*3 390	1 700	*2 490	1 260			*2 040	1 090	5.57
	-2 m			*3 550	2 650	*2 670	1 720					*1 940	1 330	4.84
	-3 m													
Arm 2.12 m Shoe 450 mm	4 m					*1 880	*1 880	*1 820	1 450	*1 490	1 070	*1 440	1 060	6.01
	3 m					*2 320	1 990	*2 010	1 410	*1 840	1 060	*1 430	940	6.44
	2 m					*2 970	1 880	*2 290	1 360	*1 950	1 030	*1 470	870	6.65
	1 m					*3 520	1 770	*2 560	1 300	*2 060	1 000	*1 580	850	6.67
	0 m			*2 540	2 540	*3 730	1 700	*2 690	1 250	*2 100	980	*1 790	870	6.50
	-1 m	*2 500	*2 500	*3 910	2 570	*3 580	1 680	*2 610	1 230	*1 950	970	*1 860	940	6.12
	-2 m	*3 980	*3 980	*4 350	2 590	*3 080	1 680	*2 220	1 240			*1 830	1 100	5.48
	-3 m			*2 810	2 660	*2 000	1 730					*1 620	1 500	4.42

- Notes:
1. Ratings are based on ISO 10567.
 2. Lifting capacity of the ZAXIS Series does not exceed 75% of tipping load with the machine on firm level ground, or 87% full hydraulic capacity.
 3. The load point is the center-line of the bucket pivot mounting pin on the arm.
 4. *Indicates load limited by hydraulic capacity.
 5. 0 m = Ground.

Standard Equipment

Standard equipment may vary by country, so please consult your Hitachi dealer for details.

ENGINE

- P mode control
- E mode control
- 30 A alternator
- Dry-type air filter with evacuator valve (with safety element)
- Cartridge-type engine oil filter
- Cartridge-type fuel filter
- Air cleaner double filters
- Radiator and oil cooler with dust protective net
- Radiator reserve tank
- Fan guard
- Isolation-mounted engine
- Auto-idle system

HYDRAULIC SYSTEM

- E-P control system
- Quick warm-up system for pilot circuit
- Shockless valve in pilot circuit
- Boom anti-drift valve
- Control valve with main relief valve
- Extra port for control valve
- Suction filter
- Full-flow filter
- Pilot filter

CABIN

- CRES (Corner Reinforced Structure) cabin
- OPG top guard fitted Level I (ISO) compliant cabin
- All-weather sound-suppressed steel cabin
- Reinforced, tinted glass windows
- 4 fluid-filled elastic mounts
- Front windows upper-, lower- and left side can be opened
- Intermittent windshield wipers
- Front window washer
- Footrest
- Electric double horn
- AM - FM radio with digital clock
- Auto-idle
- Seat belt
- Drink holder
- Cigar lighter
- Ashtray
- Storage box
- Glove compartment
- Fire extinguisher bracket
- Floor mat
- Pilot control shut-off lever
- Engine stop knob
- Auto control air conditioner
- Transparency roof with roll curtain
- Suspension seat

MONITOR SYSTEM

- Meters: Hourmeter and trip-meter, engine coolant temperature gauge and fuel gauge
- Warning lamps: Alternator charge, engine oil pressure, engine overheat, air filter restriction and minimum fuel level
- Pilot lamps: Engine preheat, work light, auto-idle
- Alarm buzzers: Engine oil pressure and engine overheat

LIGHTS

- 2 working lights

UPPERSTRUCTURE

- Undercover
- 1 200 kg counterweight
- Fuel level float
- Hydraulic oil level gauge
- Tool box
- Rearview mirror (right & left side)
- Swing parking brake

UNDERCARRIAGE

- Travel parking brake
- Travel motor covers
- Hydraulic track adjuster
- Bolt-on sprocket
- Upper rollers and lower rollers
- Reinforced track links with pin seals

FRONT ATTACHMENTS

- HN bushing
- WC thermal spraying
- Bucket clearance adjust mechanism
- Monolithically cast bucket link A
- Centralized lubrication system
- Dirt seal on all bucket pins

MISCELLANEOUS

- Standard tool kit
- Lockable machine covers
- Lockable fuel filling cap
- Handrails
- Travel direction mark on track frame
- Onboard ICX

Optional Equipment

Optional equipment may vary by country, so please consult your Hitachi dealer for details.

CABIN

- Front glass lower guard
- Front glass upper guard
- Overhead guard
- Anti-vandal cover
- Suspension seat with heater
- Air suspension seat with heater
- Rain guard
- Sun visor
- Additional fuse box
- Immobilizer key
- 12 V power source

LIGHTS

- Additional cabin roof front lights
- Additional cabin roof rear lights
- Rotating lamp
- Additional boom light with cover

UNDERCARRIAGE

- Track undercover
- Blade cutting edge fix type (width: 2 320 mm and 2 450 mm)
- Blade cutting edge replaceable type (width: 2 320 mm)

ATTACHMENT

- Hammer and crusher piping
- Parts for hammer
- Parts for hammer and crusher
- Parts for 2 speed selector
- Assist piping
- Additional pump (53 l/min)
- Reinforced link B
- Reinforced arm
- Quick coupler piping

OTHERS

- Hose rupture valves
- Overload warning device
- Electric fuel refilling pump
- Fuel double filters
- High-performance full-flow filter (with restriction indicator)
- Biodegradable oil

Hitachi Construction Machinery (Europe) NV

Souvereinstraat 16, 4903 RH Oosterhout, P.O. Box 404, 4900 AK Oosterhout, The Netherlands
T +31-(0)162 48 44 00, F +31-(0)162 45 74 53, www.hcme.com

Siciliëweg 5, Haven 5112, 1045 AT Amsterdam, P.O. Box 59239, 1040 KE Amsterdam, The Netherlands
T +31-(0)20 44 76 700, F +31-(0)20 33 44 045, www.hcme.com



HITACHI

**Breaking
new
ground**